

RI 4193

HDMI feedthru filter

Panel mountable HDMI feedthru filter with 50 dB filter suppression from 1.8 GHz to 40 GHz.



OVERVIEW

The Ranatec RI 4193 is a high performance feedthru filter for all types of applications where HDMI signals need to be fed through a shielded wall. It has got very good filter suppression performance over all mobile frequency bands.

APPLICATION

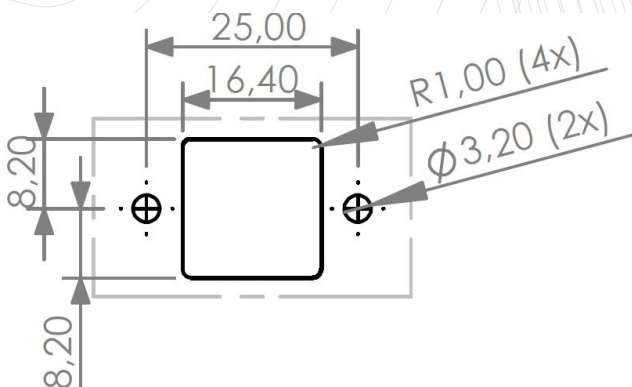
Primarily designed to fit in Ranatec's RI 180 series shield boxes, but can be used separately.

ELECTRICAL INTERFACES

The physical connectors are located at each end. The filter is reciprocal, which means the mounting direction can be either way.

MECHANICAL INTERFACES

RI 4193 is prepared for panel mounting with two threaded M3 screwholes on the front. It is delivered with an EMC shielding gasket for simple and reliable mounting.



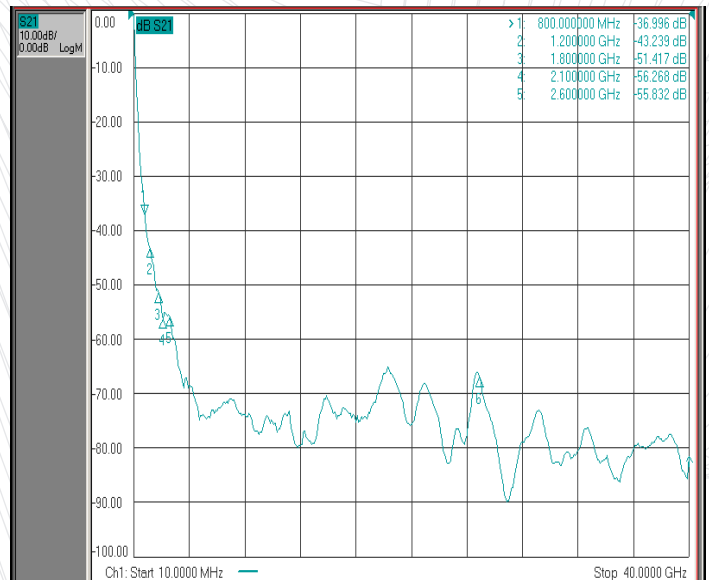
Panel cut-out recommendation (mm)

FEATURES

- Compatible with HDMI 1.4b
- Manages 4K resolution (3840 x 2160)
- Panel mountable

SPECIFICATION

- Suppression @ 600 MHz >30 dB typical
- @ 1.8 GHz >50 dB typical
- @ 3-40 GHz >60 dB typical
- Connector front HDMI standard A
- Connector back HDMI standard A
- Material Aluminium
- Dimensions (WxDxH) 36x67x24 mm
- Weight 90 g



Typical filter suppression of a TDMS channel

ORDERING

RI 4193

HDMI Feedthru Filter