

## DUAL LINE SINGLE PHASE FILTERS (LRX SERIES)

ETS-Lindgren's Dual Line Single Phase Filters are individual, stand-alone dual circuit filters from our LRX series of power line filters.



ETS-Lindgren's Dual Line Single Phase Filters are individual, stand-alone dual circuit filters from our LRX series of power line filters. ETS-Lindgren manufactures UL Listed power line filters in a variety of mechanical configurations to meet your requirements. The basic, general purpose filter is the LRX series.

The Dual Line Single Phase Filters are designed for wall-mounted installation. This dual circuit power line filter can be used on AC or DC power lines including two wire AC systems with both lines above ground or three wire AC systems where one of the conductors is at ground potential and grounded to the filter case.

The LRX series of power line filters are designed for 277 volt line-to-ground, 480 volt line-to-line, 0 to 60 Hz applications. However, these filters can also be used for lower voltage ratings, such as 120/208 volts, with no adverse effect.

### Key Features

- Part of Our LRX Series of Filters
- Designed for 277 volt line-to-ground, 480 volt line-to-line, 0 to 60 Hz Applications
- Manufactured to the Most Current Version of UL-1283
- In accordance with the Low Voltage Directive
- LRX Power Line Filters meet the following standards:
  - MIL-F-15733
  - MIL-STD-220C
  - UL 1283 5th ed.
  - IEC 60939
  - LVD (2006/95/EC)

### Specifications

## Electrical Specifications

Model Number	Current Rating	Stopband Insertion Loss
LRX-2005-S2	2 x 5 A	100 dB, 14 kHz to 40 GHz
LRX-2010-S2	2 x 10 A	100 dB, 14 kHz to 40 GHz
LRX-2020-S2	2 x 20 A	100 dB, 14 kHz to 40 GHz
LRX-2030-S2	2 x 30 A	100 dB, 14 kHz to 40 GHz
LRX-2050-S2	2 x 50 A	100 dB, 14 kHz to 40 GHz
LRX-2060-S2	2 x 60 A	100 dB, 14 kHz to 40 GHz
LRX-2075 <sup>1</sup> -S2	2 x 75 A	100 dB, 14 kHz to 40 GHz
LRX-2100-S2	2 x 100 A	100 dB, 14 kHz to 40 GHz

**NOTE:** For Installation on shield, filters can be ordered with penetration kit. Add "/PEN" to model numbers.

<sup>1</sup> Non UL Listed

## Physical Specifications

Model Number	Case Width ("B")	Case Depth ("C")	Approximate Weight
LRX-2005-S2	22.9 cm (9.0 in)	12.7 cm (5.0 in)	27.2 kg (60.0 lb)
LRX-2010-S2	22.9 cm (9.0 in)	12.7 cm (5.0 in)	27.2 kg (60.0 lb)
LRX-2020-S2	22.9 cm (9.0 in)	12.7 cm (5.0 in)	27.2 kg (60.0 lb)
LRX-2030-S2	22.9 cm (9.0 in)	12.7 cm (5.0 in)	27.2 kg (60.0 lb)
LRX-2050-S2	35.6 cm (14.0 in)	15.2 cm (6.0 in)	45.4 kg (100.0 lb)
LRX-2060-S2	35.6 cm (14.0 in)	15.2 cm (6.0 in)	45.4 kg (100.0 lb)
LRX-2075 <sup>1</sup> -S2	35.6 cm (14.0 in)	15.2 cm (6.0 in)	45.4 kg (100.0 lb)
LRX-2100-S2	35.6 cm (14.0 in)	15.2 cm (6.0 in)	45.4 kg (100.0 lb)

**NOTE:** For Installation on shield, filters can be ordered with penetration kit. Add "/PEN" to model numbers.

<sup>1</sup> Non UL Listed

## Product Charts

Figure 1

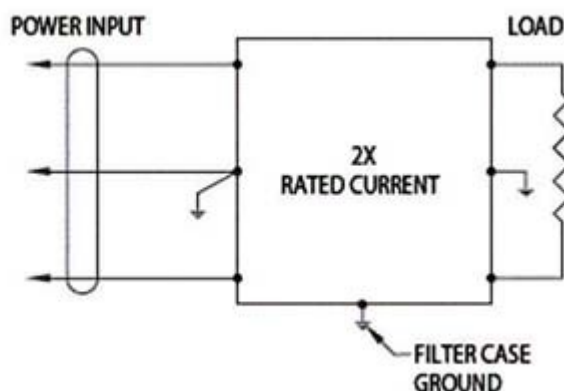
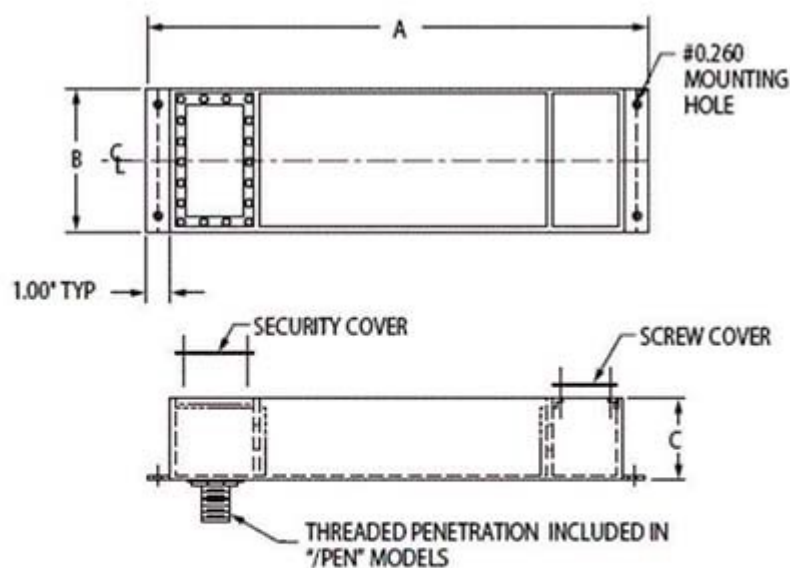


Figure 2



1. GROUNDING STUD PROVIDED INSIDE INPUT AND OUTPUT WIRING COMPARTMENTS.
2. ADDITIONAL MOUNTING HOLES PROVIDED IN MOUNTING FLANGE ON 3 AND 4 LINE FILTERS.

### Notes:

1. Triple and quad circuit (three and four wire) filters are available.
2. Custom case sizes and special performance characteristics are available.
3. If penetration assembly is required, add "/PEN" to model number when ordering. Contact the Application Engineering Department for further information.