

## ANTENNAS 3166 & 3167 TEM Horn Antennas

The ETS-Lindgren Model 3166 and 3167 TEM Horn Antennas generate homogeneous fields for immunity testing per the IEC/EN 61000-4-39 standard.



The ETS-Lindgren Model 3166 and 3167 TEM Horn Antennas generate homogeneous fields in the frequency range of 380 MHz to 6 GHz specifically for immunity testing in close proximity as per the IEC/EN 61000-4-39 standard. The 3166 model operates from 380 MHz to 3 GHz with less than 7:1 VSWR from 400 MHz to 700 MHz and 3:1 VSWR from 700 MHz and above. The 3167 operates from 3 GHz to 6 GHz with less than 2:1 VSWR.

---

### Key Features

- Generates homogeneous fields for immunity testing
- Close proximity immunity testing
- IEC/EN 61000-4-39 standard

### Specifications

## Electrical Specifications

### 3166 Electrical Specifications

Application	IEC/EN 61000-4-39
Frequency Range	380 Mhz to 3 GHz
VSWR	7:1 (400 MHz to 700 MHz) 3:1 (700 MHz to 3 GHz)
Maximum Continuous Power	250 W
Impedance (Nominal)	50
Connector	N Type, female

### 3167 Electrical Specifications

Application	IEC/EN 61000-4-39
Frequency Range	3 GHz to 6 GHz
VSWR	2:1
Maximum Continuous Power	250 W
Impedance (Nominal)	50
Connector	N Type, female

## Physical Specifications

### 3166 Physical Specifications

Width	21.6 cm (8.5 in)
Depth	47.6 cm (18.75 in)
Height	13.2 cm (5.2 in)
Approximate Weight	3.6 kg (8 lb)

### 3167 Physical Specifications

Width	7.9 cm (3.1 in)
Depth	17.3 cm (6.8 in)
Height	6.4 cm (2.5 in)
Approximate Weight	0.2 kg (0.4 lb)

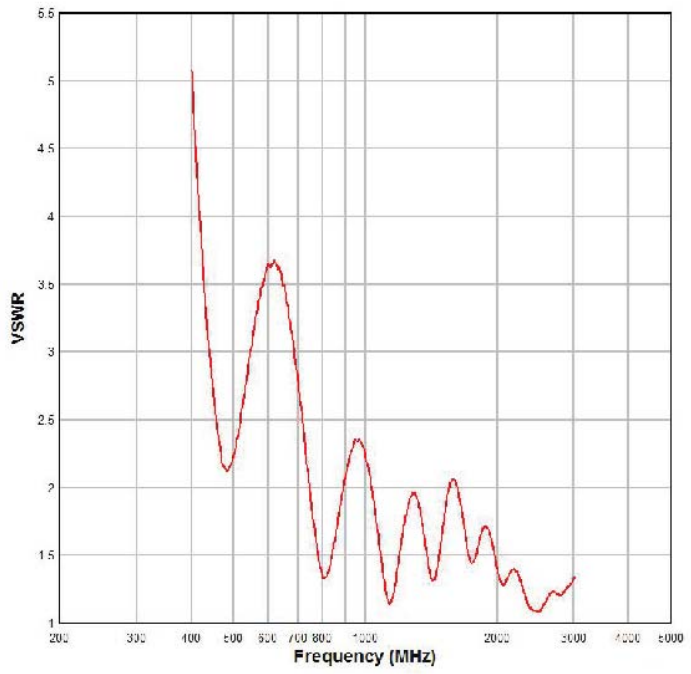
## Other Specifications

---

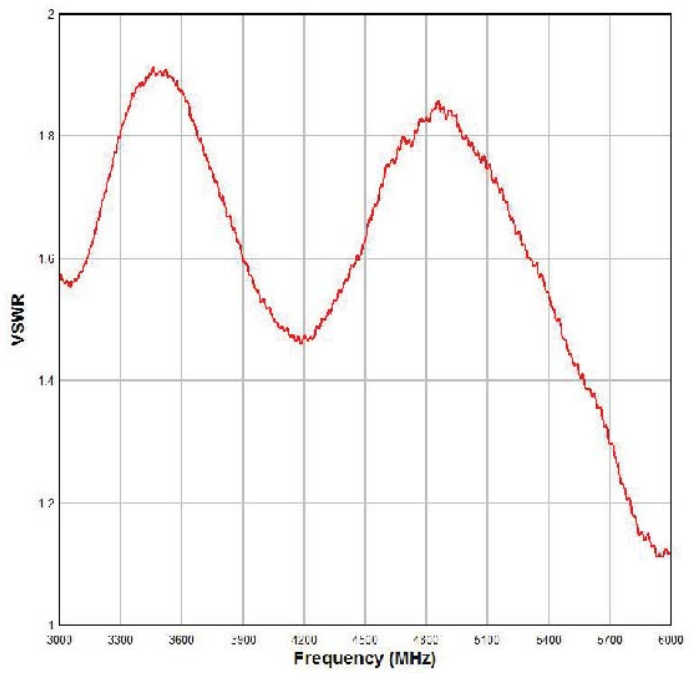
4-TR tripod: constructed of linen phenolic and delrin, designed with an adjustable center post for precise height adjustments.

Product Charts

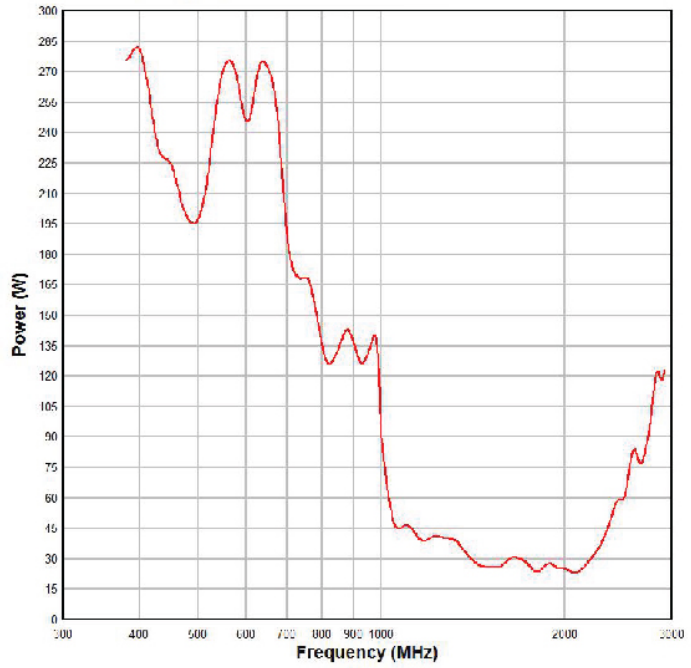
### 3166 Typical VSWR



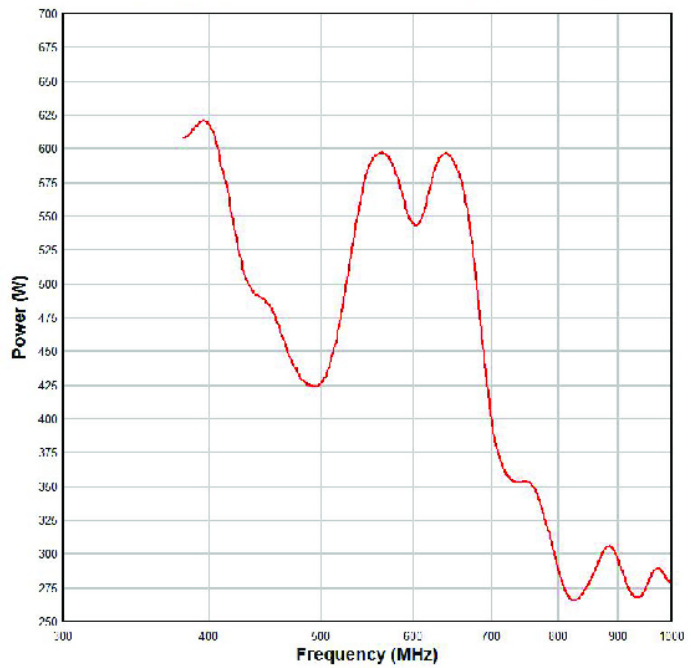
### 3167 Typical VSWR



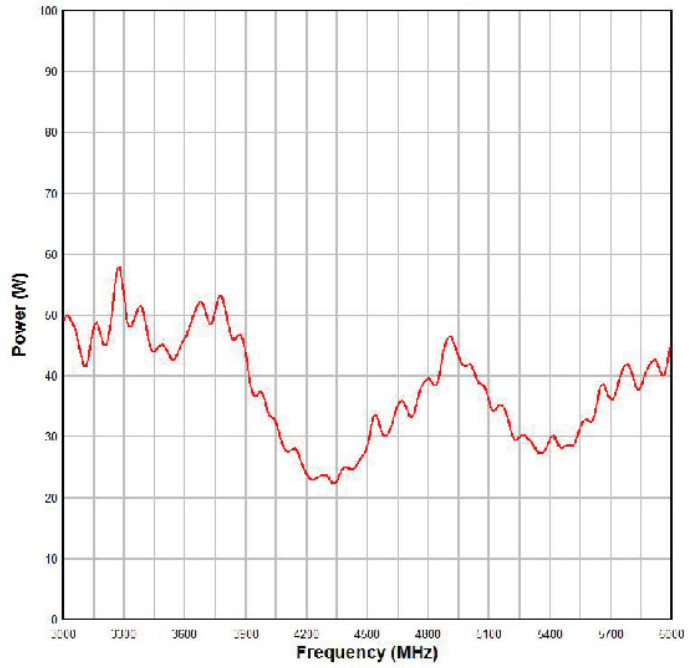
**3166 Typical Forward Power for 200 V/m at 0.1 m**



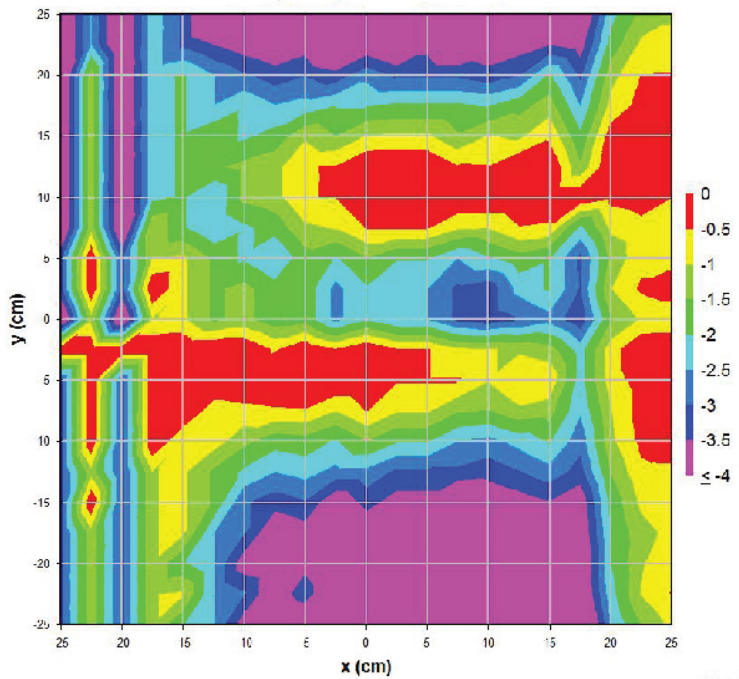
**3166 Typical Forward Power for 300 V/m at 0.1 m**



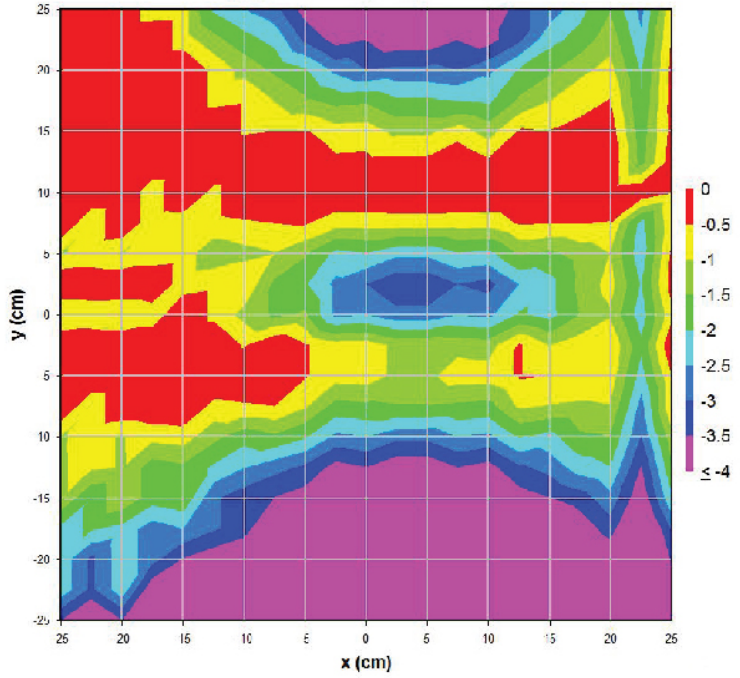
### 3167 Typical Forward Power for 150 V/m at 0.1 m



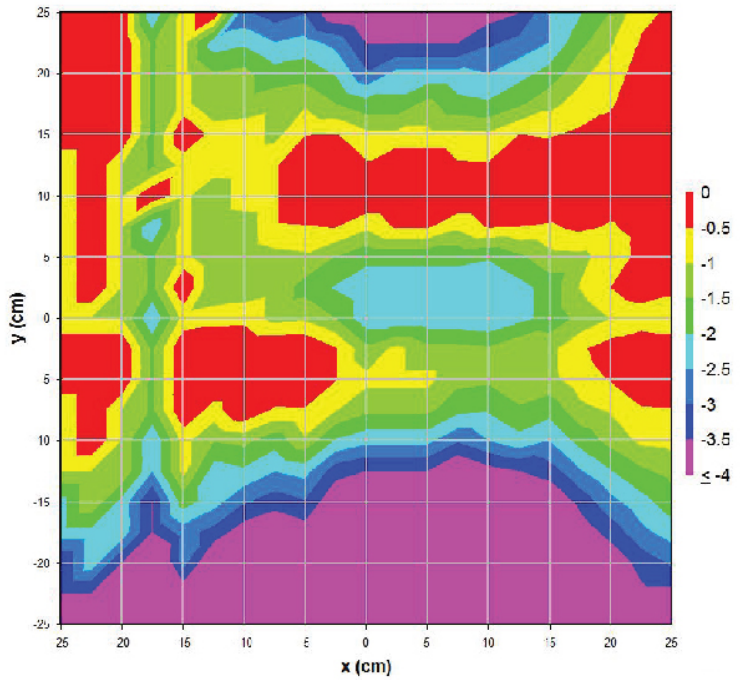
### Field Uniformity 400 MHz



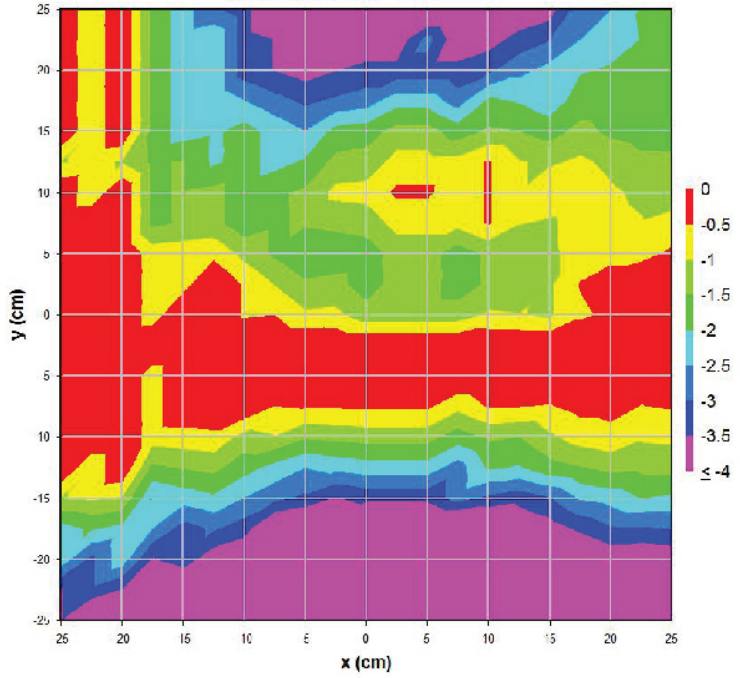
### Field Uniformity 500 MHz



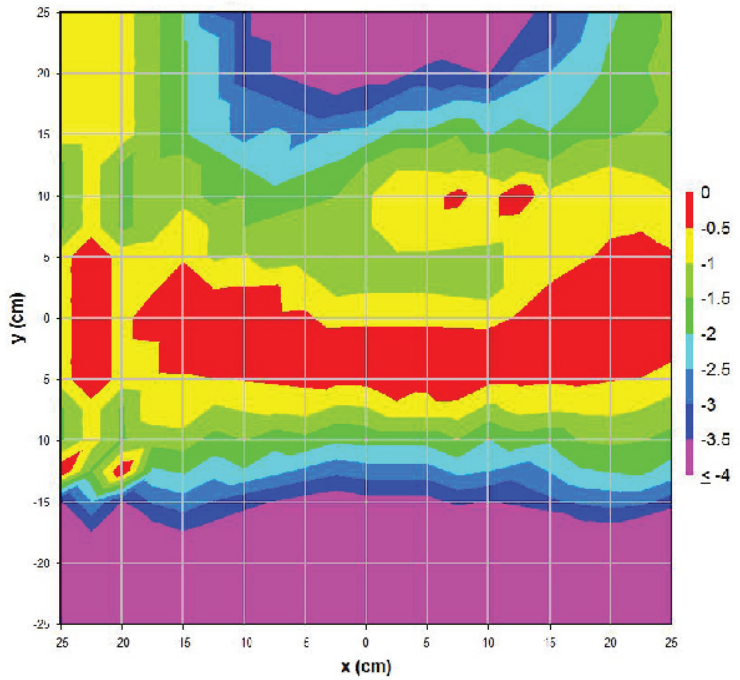
### Field Uniformity 600 MHz



### Field Uniformity 700 MHz

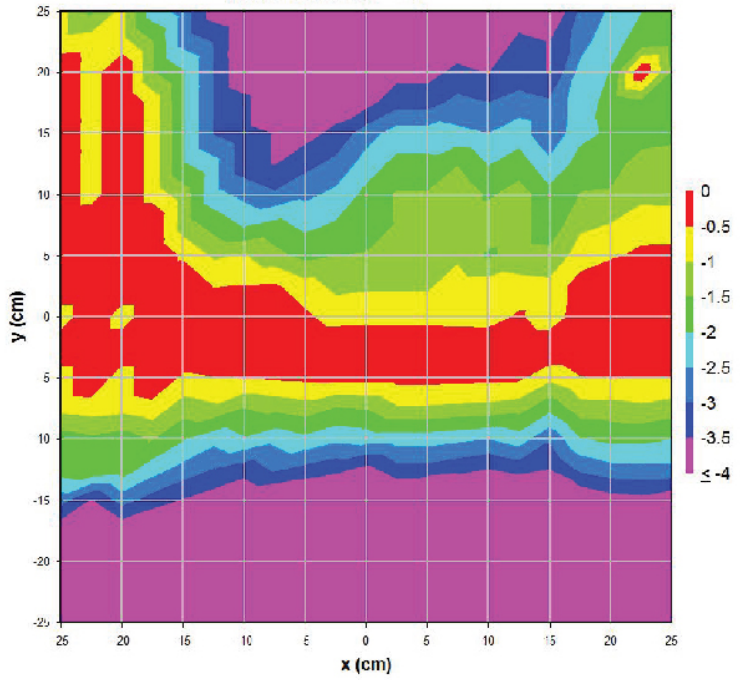


### Field Uniformity 800 MHz

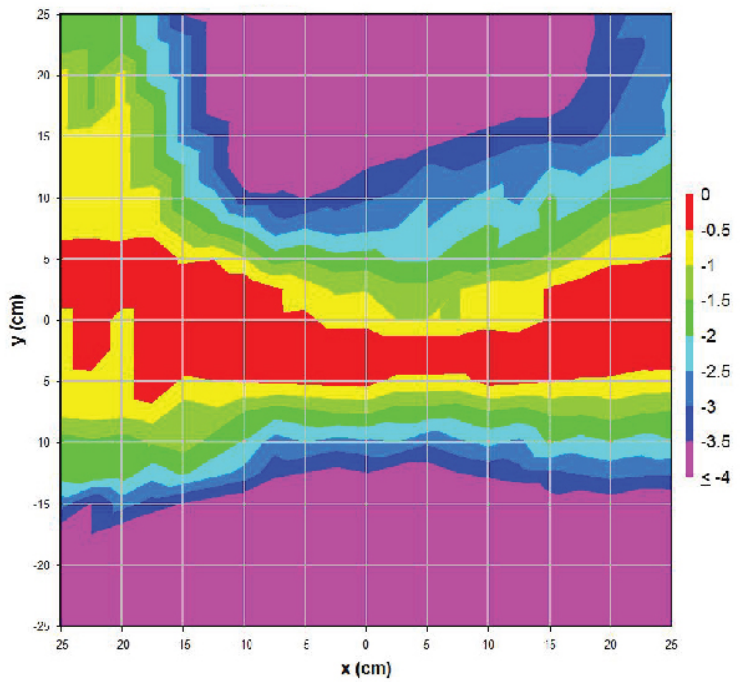




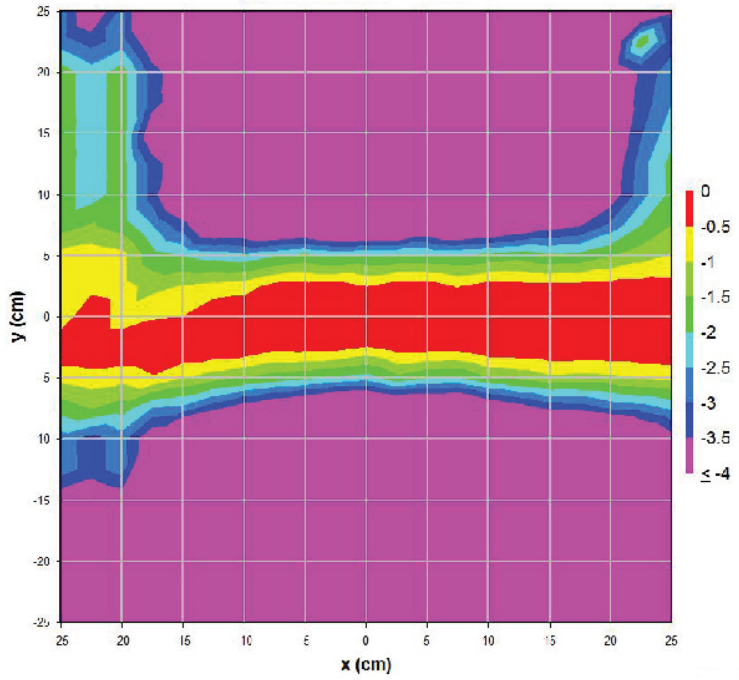
### Field Uniformity 900 MHz



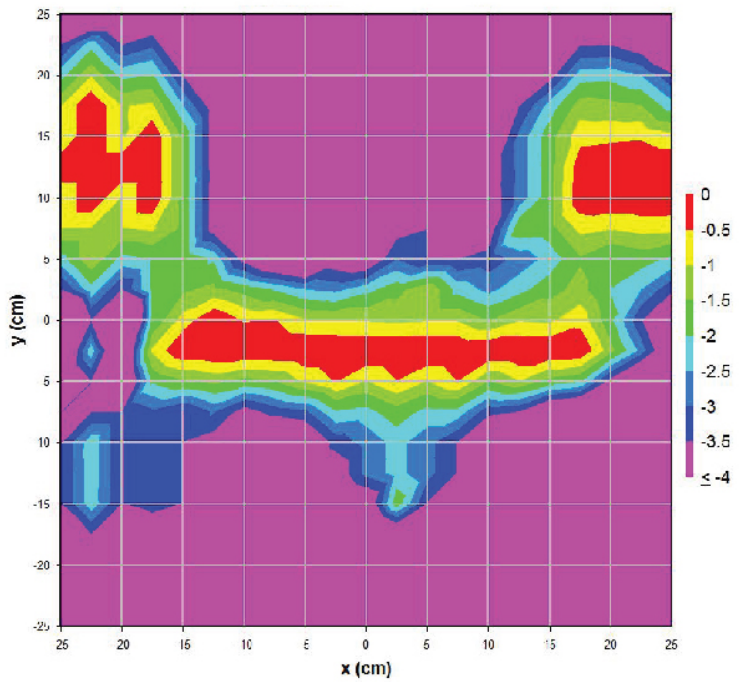
### Field Uniformity 1000 MHz



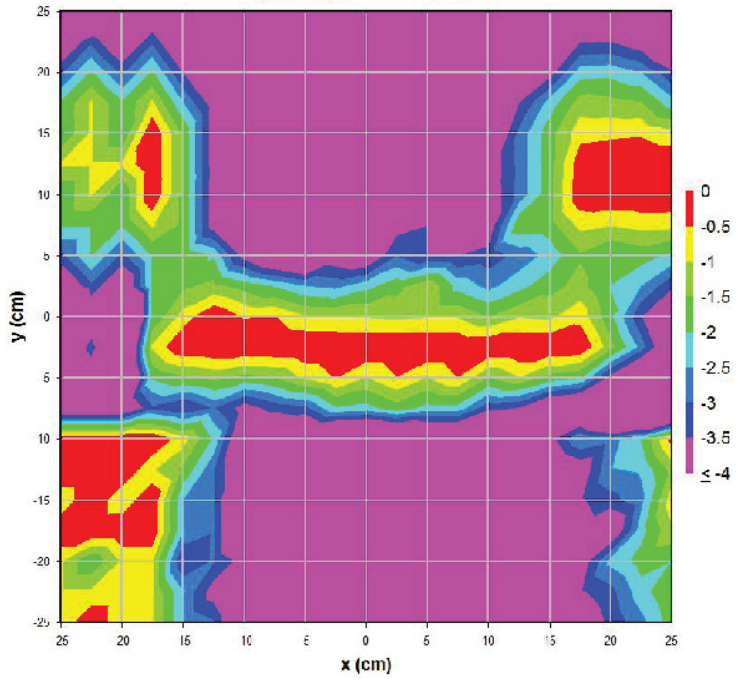
### Field Uniformity 2000 MHz



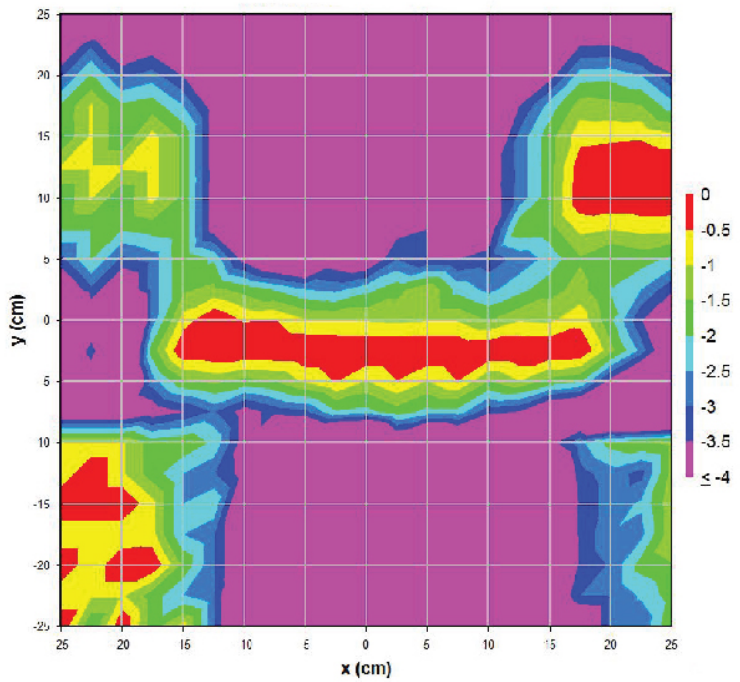
### Field Uniformity 3000 MHz



### Field Uniformity 4000 MHz



### Field Uniformity 5000 MHz



# Field Uniformity 6000 MHz

