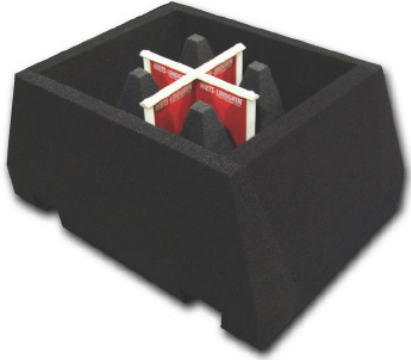


ABSORBER NESTED DUAL-POLARIZED DUAL-VIVALDI ARRAY ANTENNA

3165-01 Absorber Nested Dual-Polarized Dual-Vivaldi Array Antenna

ETS-Lindgren's Model 3165-01 Absorber Nested Dual-Polarized Dual-Vivaldi Array Antenna is designed for applications where source antenna effects must be minimized, such as chambers where the device under test (DUT) is illuminated from different directions.



ETS-Lindgren's Model 3165-01 Absorber Nested Dual-Polarized Dual-Vivaldi Array Antenna is designed for applications where source antenna effects must be minimized, such as chambers where the device under test (DUT) is illuminated from different directions.

Key Features

- 700 MHz to 6 GHz Frequency Range
- Low Reflectivity
- Dual Linearly Polarized
- Low VSWR with High Directivity
- Multiple Mounting Schemes

Features

Frequency Range

The model 3165-01 has a frequency range of 700 MHz to 6 GHz, which covers most cell phone, Wi-Fi, WiMAX and GPS bands.

Low Reflectivity

This antenna is designed to be nested in the anechoic absorber lining of a chamber. Installed in this configuration, the model 3165-01 antenna exhibits very low reflectivity, even when the input ports are mismatched. The normal incidence reflectivity is approximately -40 dB for a majority of the frequency range.

Dual-Linear Polarization

The model 3165-01 is a dual-linearly polarized antenna, capable of measuring two orthogonal components of the field simultaneously.

Low VSWR and High Directivity

The model 3165-01 possesses very low VSWR, while maintaining high directivity. This allows use in the illumination of DUTs, without affecting adjacent antennas in a multi-antenna installation.

Specifications

Electrical Specifications

Frequency Minimum: 700 MHz
Frequency Maximum: 6 GHz
Cross Polarization Isolation: >25 dB
Maximum Continuous Power: 5 W
Connectors: (2) SMA Female
Impedance: 50 Ω
Pattern Type: Directional
Polarization: Dual-Linear

Physical Specifications

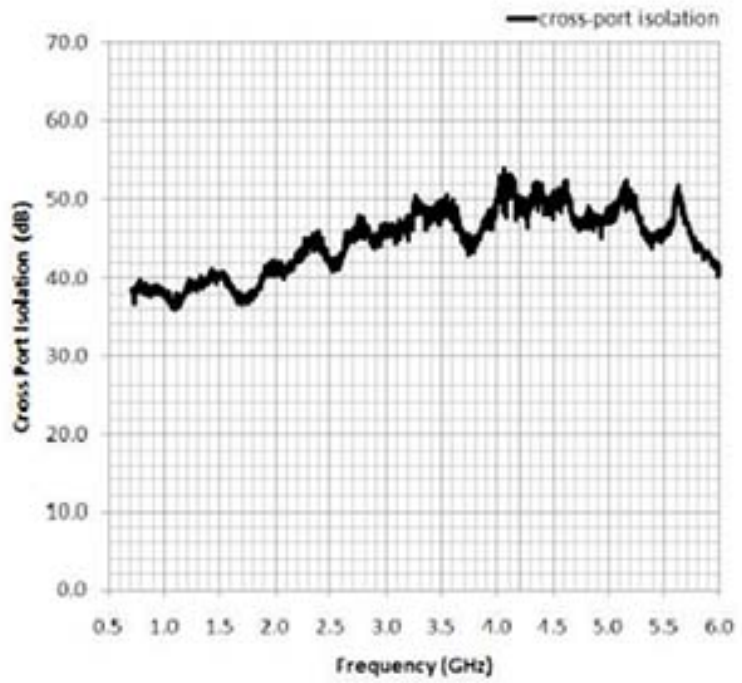
Model	Aperture Height	Aperture Width	Length	Width
3165-01-MG	17.8 cm (7.0 in)	19.0 cm (7.5 in)	19.0 cm (7.5 in)	1.3 kg (2.9 lb)
3165-01-SQ	35.5 cm (14.0 in)	35.5 cm (14.0 in)	36.3 cm (14.3 in)	2.6 kg (5.8 lb)
3165-01-RD	35.5 cm (14.0 in)	35.5 cm (14.0 in)	36.3 cm (14.3 in)	2.6 kg (5.8 lb)

Other Specifications

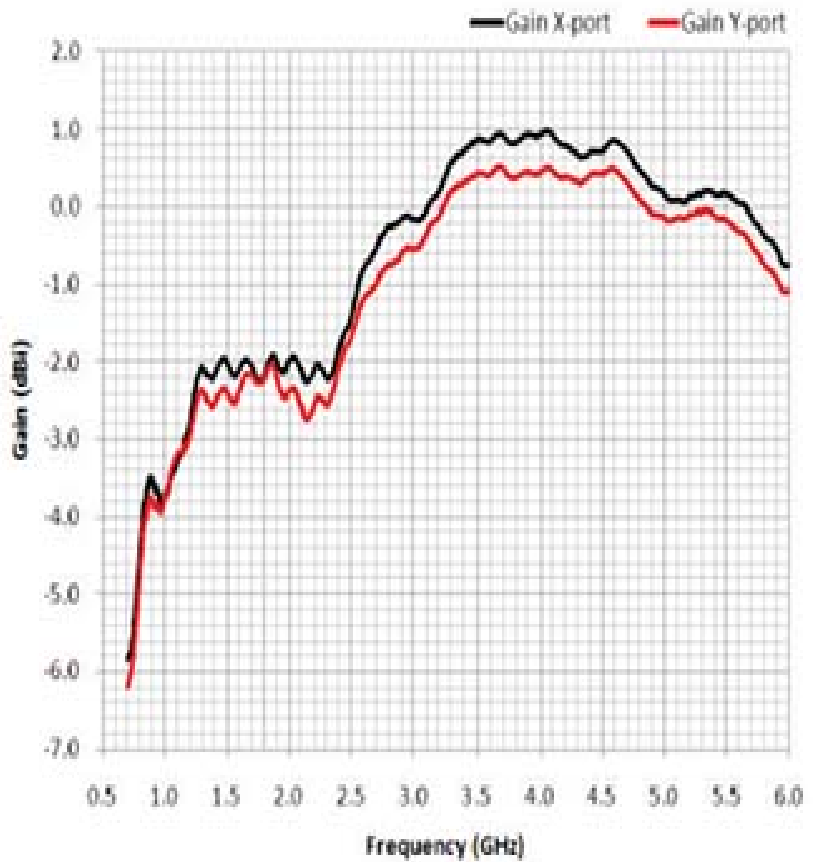
- Antenna Including the Selected Mounting (Specify when Ordering):
 - MG - Magnetic Mount
 - SQ - Mounts to 50.8 mm (2 in x 2 in) Square Tube
 - RD - Mounts to 50 mm (1.96 in) Round Pipe
- Individually Calibrated at 1 m per the SAE ARP 958

Product Charts

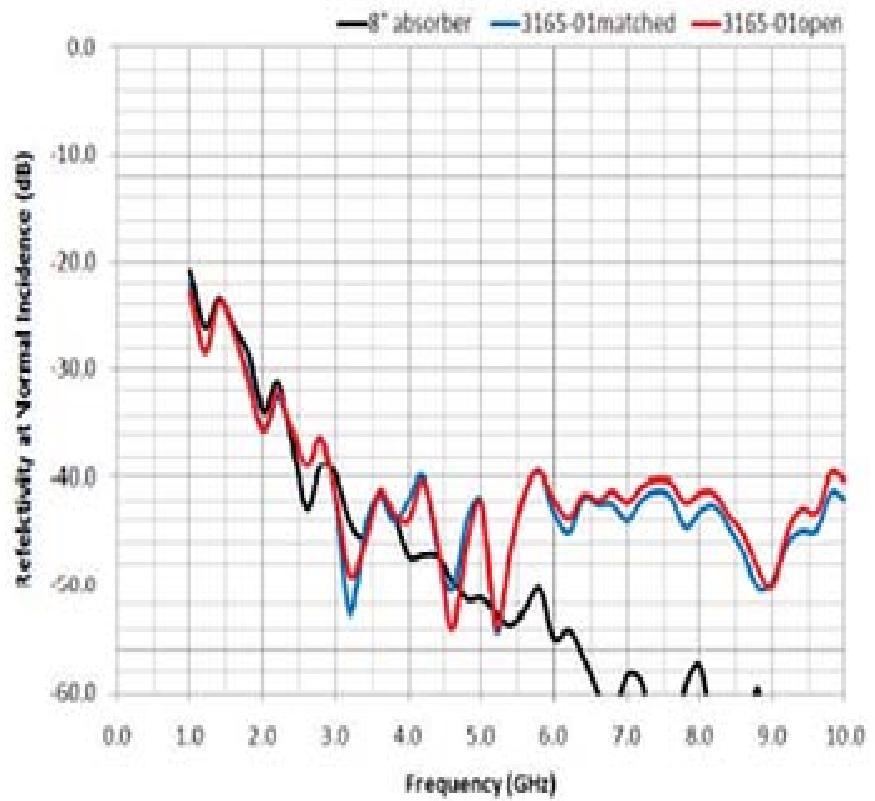
**3165-01 Absorber
Nested Dual-Polarized
Dual-Vivaldi
Array Antenna
Cross Port Isolation**



**3165-01 Absorber
Nested Dual-Polarized
Dual-Vivaldi
Array Antenna
Gain
Typical Performance**



**3165-01 Absorber
Nested Dual-Polarized
Dual-Vivaldi
Array Antenna
Reflectivity**



**3165-01 Absorber
Nested Dual-Polarized
Dual-Vivaldi
Array Antenna
VSWR
Typical Performance**

