

FEATURES:

- 100 dB Insertion Loss from 40 kHz up to 40 GHz
- Low Power Dissipation
- Suitable for 400 Hz Supplies
- Compact, Rugged Construction
- Current Range 16 A to 200 A
- Filters-2-Go Immediate Availability (Select Models)



N500X Series Power Filters

THE N500X POWER FILTERS are high performance EMI power filters for use in EMC, TEMPEST applications, and anywhere a high performance screened room or anechoic application filters with low power dissipation.

DESCRIPTION

The N500X generation from ETS-Lindgren includes a reduction in power dissipation versus current rating. The entire range is available with optionally fitted transient suppressors for surge and spike protection.

The filter networks are all RF sealed in high quality electro-tin plated steel cases. The load current should return through the filter to maintain maximum performance.

Solid and permanent earthing of the case is essential for safety reasons and to ensure optimum performance.

All ETS-Lindgren filters are RoHS Compliant and are CE marked for compliance with the low voltage directive.

FEATURES

Insertion Loss

The N500X power filters afford insertion loss in excess of 100 dB from as low as 40 kHz and up to 40 GHz for both off load and on load conditions.

Low Power Dissipation

These power filters offer very low power dissipation and a case temperature rise of 20° C at full load.

400 Hz Supplies

The N500X series of power filters are suitable for 400 Hz supplies at 110 VAC when operational.

Compact and Rugged

The N500X series offer a durable, compact design, and are lighter in weight in comparison to filters with similar current ranges.

Current Range

All N500X filters offers current ranges from 16 A to 200 A, in both Single Phase +N and Three Phase +N.

Immediate Availability

Some filters in the N500X series are offered in our Filters-2-Go program. For more information, visit www.ets-lindgren.com/filters.

APPLICATIONS

- High Performance Screened Rooms and Anechoic Chambers; the N500X Series Provides Protection of Both Incoming and Outgoing Supplies in Line with the Shield Performance
- TEMPEST Applications; the N500X Filters Provide an Extremely High Degree of Protection Required to Obtain Maximum Security
- EMC Applications, such as Computer Suites
- General Purpose High performance Filtering

STANDARD CONFIGURATION

- Supplied with End Housings
- Dedicated Neutral

OPTIONS

- TS (Transient Suppressor)
- HVTS (High Voltage Transient Suppressor)
- Other Options Available Upon Request

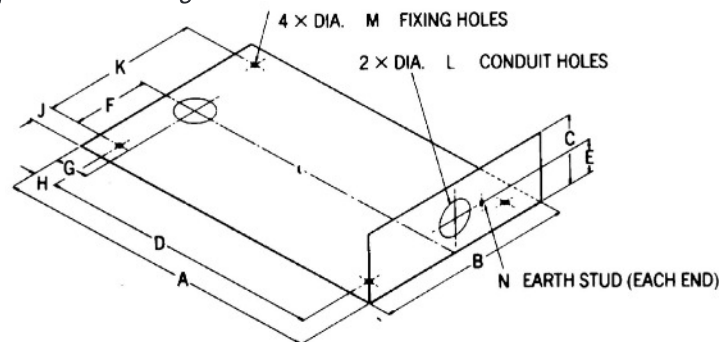
Electrical Specifications

PART #	Current Max (Amps)	Voltage Max (Volts)	Frequency (Hz)	Number of Lines	Volt Drop on Full Load in a 250V 50/60 Hz System Per Line (Max)	Full Load Dissipation (Watts)	Case Temperature Rise on Full Load	Max. Recommended Case Temperature on Full Load	Filters Fitted with 250V Transient Suppressors	Filters Fitted 400V Transient Suppressors
N5000	16	250	DC/50/60/400	2	1.3	20	20	70	TS	HVTS
N5001	16	440/250	DC/50/60/400	4	0.65	20	20	70	TS	HVTS
N5002	32	250	DC/50/60/400	2	0.3	20	20	70	TS	HVTS
N5003	32	440/250	DC/50/60/400	4	0.15	20	20	70	TS	HVTS
N5004	63	250	DC/50/60/400	2	0.4	48	20	70	TS	HVTS
N5005	63	440/250	DC/50/60/400	4	0.2	48	20	70	TS	HVTS
N5006	100	250	DC/50/60/400	2	0.3	60	20	70	TS	HVTS
N5007	100	440/250	DC/50/60/400	4	0.15	60	20	70	TS	HVTS
N5008	200	250	DC/50/60/400	2	0.2	80	20	70	TS	HVTS
N5009	200	440/250	DC/50/60/400	4	0.1	80	20	70	TS	HVTS

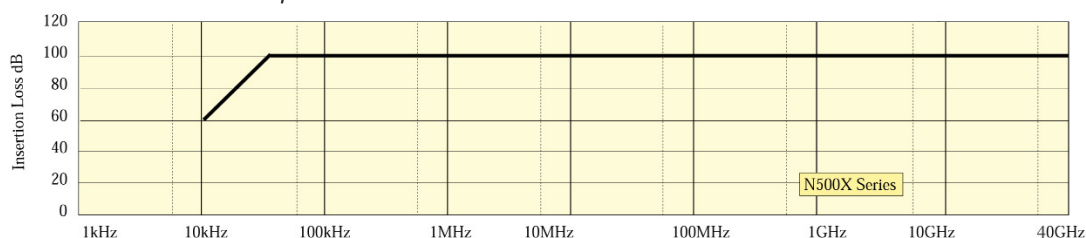
Physical Specifications

PART #	A	B	C	D	E	F	G	H	J	K	L	M	N	WEIGHT
N5000	305 mm (12.0 in)	175 mm (6.9 in)	110 mm (4.3 in)	212 mm (8.3 in)	50 mm (2.0 in)	64 mm (2.6 in)	46 mm (1.8 in)	46 mm (1.8 in)	24 mm (.9 in)	127 mm (5.0 in)	20 mm (.8 in)	7 mm (.3 in)	M6	4.3 kg (9.5 lbs)
N5001	305 mm (12.0 in)	345 mm (13.6 in)	110 mm (4.3 in)	212 mm (8.3 in)	50 mm (2.0 in)	108 mm (4.3 in)	46 mm (1.8 in)	46 mm (1.8 in)	65 mm (2.6 in)	216 mm (8.5 in)	20 mm (.8 in)	9 mm (.4 in)	M6	7.6 kg (16.8 lbs)
N5002	560 mm (22.0 in)	210 mm (8.3 in)	110 mm (4.3 in)	487 mm (19.2 in)	50 mm (2.0 in)	41 mm (1.6 in)	46 mm (1.8 in)	35 mm (1.4 in)	64 mm (2.6 in)	82 mm (3.2 in)	32 mm (1.3 in)	9 mm (.4 in)	M6	14.1 kg (31.1 lbs)
N5003	560 mm (22.0 in)	415 mm (16.3 in)	110 mm (4.3 in)	487 mm (19.2 in)	50 mm (2.0 in)	143 mm (5.6 in)	46 mm (1.8 in)	35 mm (1.4 in)	64 mm (2.6 in)	286 mm (11.3 in)	32 mm (1.3 in)	9 mm (.4 in)	M6	27.2 kg (60.0 lbs)
N5004	560 mm (22.0 in)	210 mm (8.3 in)	110 mm (4.3 in)	487 mm (19.2 in)	50 mm (2.0 in)	41 mm (1.6 in)	46 mm (1.8 in)	35 mm (1.4 in)	64 mm (2.6 in)	82 mm (3.2 in)	32 mm (1.3 in)	9 mm (.4 in)	M6	15.4 kg (34.0 lbs)
N5005	560 mm (22.0 in)	415 mm (16.3 in)	110 mm (4.3 in)	487 mm (19.2 in)	50 mm (2.0 in)	143 mm (5.6 in)	46 mm (1.8 in)	35 mm (1.4 in)	64 mm (2.6 in)	286 mm (11.3 in)	32 mm (1.3 in)	9 mm (.4 in)	M6	28.4 kg (62.6 lbs)
N5006	660 mm (26.0 in)	205 mm (8.0 in)	165 mm (6.5 in)	537 mm (21.1 in)	68 mm (2.7 in)	41 mm (1.6 in)	75 mm (3.0 in)	62 mm (2.4 in)	61 mm (2.4 in)	82 mm (3.2 in)	32 mm (1.3 in)	9 mm (.4 in)	M6	22.0 kg (48.5 lbs)
N5007	660 mm (26.0 in)	410 mm (16.1 in)	165 mm (6.5 in)	537 mm (21.1 in)	68 mm (2.7 in)	143 mm (5.6 in)	75 mm (3.0 in)	62 mm (2.4 in)	62 mm (2.4 in)	286 mm (11.3 in)	50.0 mm (2.0 in)	9 mm (.4 in)	M6	32.0 kg (70.1 lbs)
N5008	660 mm (26.0 in)	205 mm (8.0 in)	165 mm (6.5 in)	557 mm (21.1 in)	68 mm (2.7 in)	41 mm (1.6 in)	75 mm (3.0 in)	62 mm (2.4 in)	61 mm (2.4 in)	82 mm (3.2 in)	32 mm (1.3 in)	9 mm (.4 in)	M6	26.8 kg (59.1 lbs)
N5009	660 mm (26.0 in)	410 mm (16.1 in)	165 mm (6.5 in)	537 mm (21.1 in)	68 mm (2.7 in)	143 mm (5.6 in)	75 mm (3.0 in)	62 mm (2.4 in)	62 mm (2.4 in)	286 mm (11.3 in)	50.0 mm (2.0 in)	9 mm (.4 in)	M6	44 kg (97.0 lbs)

N500X Series Physical Specification Diagram



N500X Series Performance Graph



TYPICAL FILTER PERFORMANCE

Typical asymmetric performance (on and off load) for N500X Series as measured in accordance with MIL-STD 220C with additional testing to 10GHz.

Phone + 1.512.531.6400 • info@ets-lindgren.com • www.ets-lindgren.com
Offices in the US, Brazil, Finland, Germany, UK, France, India, Japan, Singapore, China, Taiwan