

THE NEW GLOBAL POWER FOR  
ELECTROMAGNETIC COMPATIBILITY.

THE WORLD'S SPEED IS OUR BEAT

**AMETEK**  
COMPLIANCE TEST SOLUTIONS

**MILMEGA**

RF/Microwave Amplifiers

## The MILMEGA 'AS' Series Dual Band Class A Solid State Amplifier for Automotive Radar Pulse Testing

**Model: AS0104R-280/300**  
**Dual Band Broadband**  
**Amplifier**

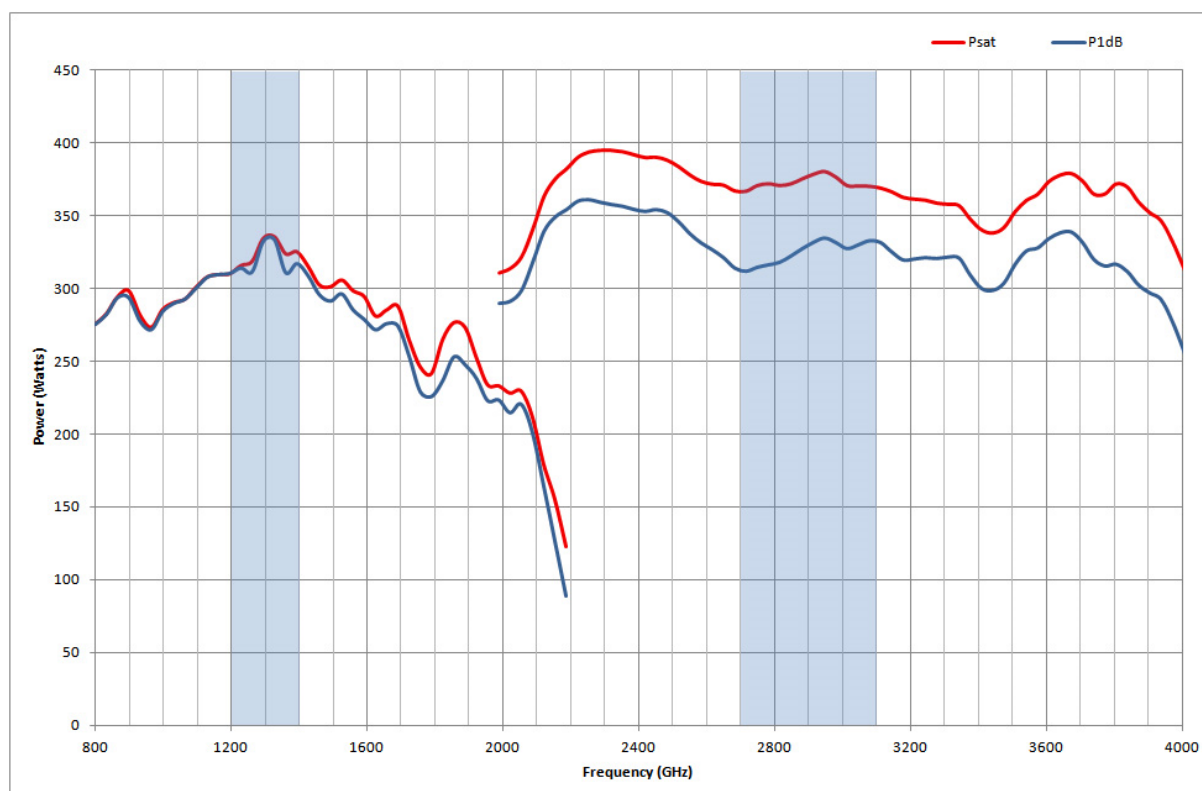


The AS0104R series of solid state power amplifiers follows the MILMEGA tradition for compact, upgradeable microwave power amplifier solutions with field proven reliability. Developed to cover the frequency band 1.0 - 4.0 GHz in two bands (1.0 GHz to 2.0 GHz and 2.0 GHz to 4.0 GHz).

This amplifier is specially tuned and specified in the two automotive radar bands in order to guarantee at least 280 watts of usable power in the 1.2-1.4GHz range and 330 watts in the 2.7-3.1GHz range.

Either RS232, USB and Ethernet or RS232 and GPIB remote controls can be fitted at no additional cost.

The unique 5 year parts and labour warranty on all MILMEGA amplifiers.



# Amplifier Specification

	<i>Minimum Psat</i>	<i>Minimum P1dB</i>
<b>1.2-1.4GHz</b>		
Power (As highlighted on graph)	280 W	225 W
Gain	49.5 dB	
<b>2.7-3.1GHz</b>		
Power (As highlighted on graph)	330 W	295 W
Gain	50.6 dB	
<b>1.0-2.0GHz</b>		
Power	200 W	190 W
Gain	48.0dB	
Noise figure		6.0 dB
<b>2.0-4.0GHz</b>		
Power (As highlighted on graph)	220 W	190 W
Gain	48.0 dB	
Noise figure		8.0 dB

<i>System Parameters</i>	<i>Typical</i>	<i>Maximum</i>
Harmonics as Saturation	-20 dBc	
Gain variation with frequency	+/- 2 dB	
Gain variation with temperature	<0.06 dB/°C	
Input Power (no damage)		+15 dBm
Output VSWR tolerance	Infinite any phase	
Stability	Unconditional	
Output impedance	50 Ohm	
Output VSWR	2:1	
Input VSWR	2:1	
Third order intercept point IP3	10dB > P1dB	
Spurious	70 dBc	
Safety interlock	Via rear panel D-sub connector	
Supply Voltage	180 to 240 VAC +/- 10% or 90 to 132 VAC +/- 10%	
Supply Frequency	47 to 63 Hz	
Supply Power	3.8Kva (Max)	4.5 kVA (theoretical maximum)
RF Input	Type N female	
RF Output	Type N female	
Dimension	19 inch, 16U case, 776mm Deep	
Weight	170 kg	

Amplifiers that meet today's and tomorrow's needs through upgradability.

Amplifiers in this family include the AS0104R-280/150, AS0104R-280/300, AS0104R-500/300 and AS0104R-800/400 with the MILMEGA Modularity, Upgrade path and 5 Year Warranty.



Specifications subject to change without notice. MILMEGA is an ISO accredited Company. Products are designed and manufactured under strict quality and environmental requirements of ISO 9001.



**RF/Microwave Amplifiers**

MILMEGA Limited Park Road, Ryde, Isle of Wight PO33 2BE United Kingdom  
Tel. +44 (0) 1983 618004 Fax. +44 (0) 1983 811521 sales@milmega.co.uk www.milmega.co.uk