

FEATURES:

- Extremely Low Current Leakage
- Over 100 dB insertion Loss From 150 kHz to 40 GHz
- Suitable for Mobile Installations
- Fully Accessible End Chambers
- RoHS Compliant and CE Marked for Compliance with the Low Voltage Directive



N242X Series Power Filters

THE N242X Power Filters are low leakage RFI/EMI high performance power filters.

DESCRIPTION

The N242X filters have been designed for use where low earth leakage is a requirement. The performance is maintained up to full load in both symmetric and asymmetric modes. The leakage current is directly proportional to the potential difference between the neutral and earth leads at the filter input terminals.

Solid and permanent earthing of the case is essential for safety and to ensure optimum performance.

FEATURES

Maximum Protection

N242X filters have an extremely low current leakage. They are fully tested for attenuation performance, voltage withstanding to 1 kV for thirty seconds, and insulation resistance.

Insertion Loss

The N242X series of filters provide 100 dB insertion loss from 150 kHz to 40 GHz in both symmetric and asymmetric modes up to full load.

Mobile Installations

These filters are suitable for mobile installation applications.

End Chamber Accessibility

For termination of input and output cabling, these filters have fully accessible end chambers.

RoHS Compliant, CE Marked

N242X filters are RoHS compliant and are also CE marked for compliance with the low voltage directive.

APPLICATIONS

- Military Field Installations
- Commercial Installations Using Motor Generator Sets
- Filtering of Mains Supplies Where Maximum Safety is Required

- Under Certain Circumstances, the N242X Filters May be Used with Earth Leakage Safety Cut-outs (Please Contact ETS-Lindgren for Further Information)

STANDARD CONFIGURATION

- Filter Networks RF Sealed in High Quality Electroplated Steel Cases
- Available with a Variety of Cable Entry Options
- Fixing Kit

OPTIONS

- TS (Transient Suppressor)
- HVTS (High Voltage Transient Suppressor)
- Other Options Upon Request

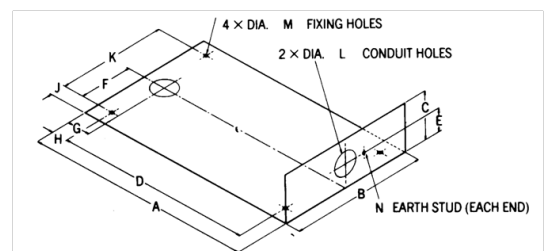
Electrical Specifications

PART #	Current Max (Amps)	Voltage Max (Volts)	Leakage Current Per Volt (N-E) (mA)	Number of Lines in a 250V 50/60 Hz System Per Line (Max)	Volt Drop on Full Load (Volts)	DC Resistance Per Line (Ω)	Series Inductance Per Line (μ F)	Shunt Capacitance Per Line (μ H)	Case Temp. Rise on Full Load ($^{\circ}$ C)	Max. Recommended Case Temp. on Full Load ($^{\circ}$ C)	Full Load Dissipation (W)
N2420	6	250	2	2	1.0	0.1	1,680.0	4.5	+10	+70	20
N2421	6	440/250	2	4	1.0	0.1	1,680.0	4.5	+10	+70	40
N2422	32	250	8	2	0.4	0.015	117.0	24.5	+12	+70	100
N2423	32	440/250	8	4	0.4	0.03	117.0	24.5	+12	+70	200
N2424	63	250	8	2	0.3	0.03	25.5	24.5	+12	+70	600
N2425	63	440/250	8	4	0.3	0.03	25.5	24.5	+12	+70	120
N2426	100	250	10	2	0.5	0.02	37.0	28.5	+25	+70	120
N2427	100	440/250	10	4	0.5	0.02	37.0	28.5	+25	+70	240

Physical Specifications

PART #	A	B	C	D	E	F	G	H	J	K	L	M	N	WEIGHT
N2420	305 mm (12.0 in)	175 mm (6.9 in)	110 mm (4.3 in)	212 mm (8.3 in)	50 mm (2.0 in)	63.5 mm (2.5 in)	46.5 mm (1.8 in)	46.5 mm (1.8 in)	24 mm (.9 in)	127 mm (5.0 in)	20 mm (.8 in)	7 mm (.3 in)	M6	5.9 kg (13.0 lbs)
N2421	305 mm (12.0 in)	345 mm (13.6 in)	110 mm (4.3 in)	212 mm (8.3 in)	50 mm (2.0 in)	108 mm (4.3 in)	46.6 mm (1.8 in)	46.5 mm (1.8 in)	64.5 mm (2.5 in)	216 mm (8.5 in)	20 mm (.8 in)	9 mm (.4 in)	M6	11.8 kg (26.0 lbs)
N2422	560 mm (22.0 in)	210 mm (8.3 in)	110 mm (4.3 in)	487 mm (19.2 in)	50 mm (2.0 in)	41.2 mm (1.6 in)	46 mm (1.8 in)	35 mm (1.4 in)	63.8 mm (2.5 in)	82.4 mm (3.2 in)	32 mm (1.3 in)	9 mm (.4 in)	M6	12.7 kg (28.0 lbs)
N2423	560 mm (22.0 in)	415 mm (16.3 in)	110 mm (4.3 in)	487 mm (19.2 in)	50 mm (2.0 in)	143 mm (5.6 in)	46 mm (1.8 in)	35 mm (1.4 in)	64.5 mm (2.5 in)	286 mm (11.3 in)	32 mm (1.3 in)	13 mm (.5 in)	M6	24.9 kg (54.9 lbs)
N2424	560 mm (22.0 in)	210 mm (8.3 in)	110 mm (4.3 in)	487 mm (19.2 in)	50 mm (2.0 in)	41.2 mm (1.6 in)	46 mm (1.8 in)	35 mm (1.4 in)	63.8 mm (2.5 in)	82.4 mm (3.2 in)	32 mm (1.3 in)	9 mm (.4 in)	M6	12.7 kg (28.0 lbs)
N2425	560 mm (22.0 in)	415 mm (16.3 in)	110 mm (4.3 in)	487 mm (19.2 in)	50 mm (2.0 in)	143 mm (5.6 in)	46 mm (1.8 in)	35 mm (1.4 in)	64.5 mm (2.5 in)	286 mm (11.3 in)	32 mm (1.3 in)	13 mm (.5 in)	M6	24.9 kg (54.9 lbs)
N2426	560 mm (22.0 in)	210 mm (8.3 in)	110 mm (4.3 in)	487 mm (19.2 in)	50 mm (2.0 in)	41.2 mm (1.6 in)	46 mm (1.8 in)	35 mm (1.4 in)	63.8 mm (2.5 in)	82.4 mm (3.2 in)	32 mm (1.3 in)	9 mm (.4 in)	M6	17.7 kg (39.0 lbs)
N2427	560 mm (22.0 in)	415 mm (16.3 in)	110 mm (4.3 in)	487 mm (19.2 in)	50 mm (2.0 in)	143 mm (5.6 in)	46 mm (1.8 in)	35 mm (1.4 in)	64.5 mm (2.5 in)	286 mm (11.3 in)	50.8 mm (2.0 in)	13 mm (.5 in)	M6	34 kg (75.0 lbs)

N242X Physical Specification Diagram



N242X Series Performance Graph

